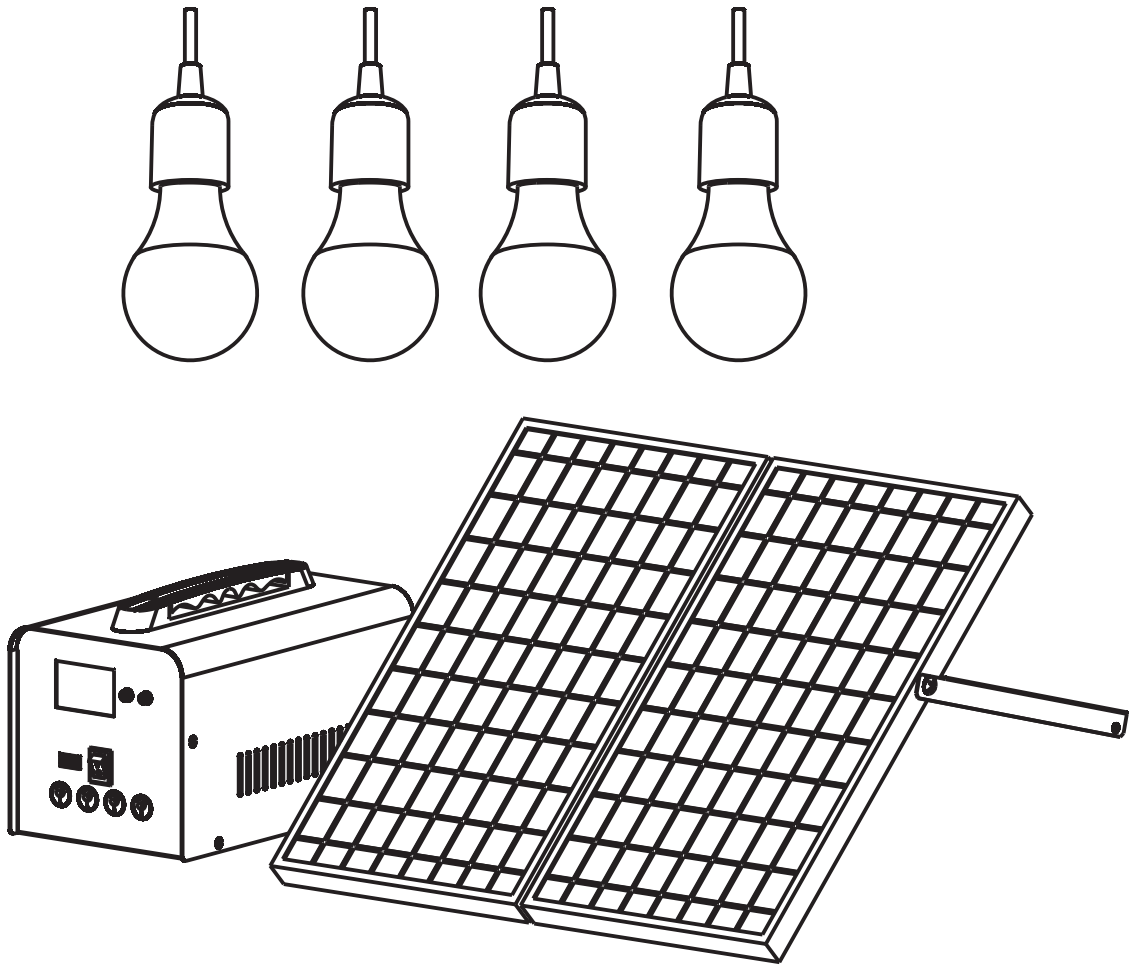


# Technaxx® \* User Manual

## 18W Solar Power Station Set TX-200

### With LED lamps



Before using the appliance for the first time, please read the instructions for use and safety information carefully.

This appliance is not intended for use by persons (including children) with reduced physical, sensory or mental capacities, or by persons lacking in experience or knowledge, unless they are supervised or instructed on the use of this device by a person responsible for their safety. Children should be supervised to ensure they do not play with this device.

Keep this user manual for future reference or product sharing carefully. Do the same with the original accessories for this product. In case of warranty, please contact the dealer or the store where you bought this product.

***Enjoy your product. \* Share your experience and opinion on one of the well-known internet portals.***

## Table of Contents

Note .....	2	LED light bulb system .....	4
Safety instructions .....	2	USB output.....	4
Features .....	3	Solar powered charging .....	5
Product description .....	3	Technical specifications .....	5
Product overview .....	4	Support.....	5
First use .....	4	Care and maintenance.....	6
LED indicator light.....	4	Declaration of Conformity .....	6
LED front panel	Fehler! Textmarke nicht definiert.	Disposal .....	6

## Note

● Only use the product for purposes due to its intended function ● Do not damage the product. Following cases may damage the product: Incorrect voltage, accidents (including liquid or moisture), misuse or abuse of the product, faulty or improper installation, mains supply problems including power spikes or lightning damage, infestation by insects, tampering or modification of the product by persons other than authorized service personnel, exposure to abnormally corrosive materials, insertion of foreign objects into the unit, used with accessories not preapproved. ● Refer to and heed all warnings, precautions and safety instructions in the user manual.

## Safety instructions

● Read the operating instructions carefully. They contain important information on the use, safety and maintenance of the device. Keep the operating instructions in a safe place and pass them on to subsequent users if necessary. ● The device may only be used for its intended purpose in accordance with these operating instructions. ● Do not look directly into the LED light panel or direct the beam into the eyes of others to avoid injury. ● Observe the safety instructions during use. ● Before commissioning, check the device and its connecting cable as well as accessories for damage. Do not use the device if it shows visible damage. ● Operate the device only from household power sources. Check whether the mains voltage specified on the type plate corresponds to that of your mains supply. ● Do not squeeze the power cord, do not pull it over sharp edges or hot surfaces; do not use the power cord for carrying. ● If the power cord of this device is damaged, it must be replaced by the manufacturer or its customer service or a similarly qualified person in order to avoid hazards. ● The appliance is intended for household or similar use only. It must not be used for commercial purposes! ● Make sure that the device is well secured during operation and cannot be tripped over by cables. ● Never use the device after a malfunction, e.g., if the device has been dropped into water or damaged in any other way. ● The manufacturer assumes no responsibility in the event of incorrect use resulting from failure to follow the instructions for use. ● Modification or alteration of the product will

affect the product safety. Caution: Risk of injury! ● All modifications and repairs to the device or accessories may only be carried out by the manufacturer or persons expressly authorized by the manufacturer for this purpose. ● Make sure that the product is operated from a power source that is easily accessible so that you can quickly disconnect the device from the mains in case of an emergency. ● Never open the product without authorization. Never carry out repairs yourself! ● Handle the product with care. It can be damaged by shocks, impacts or falling from even a low height. ● Keep the product away from extreme heat. ● Never immerse the product in water or other liquids. ● Technical changes and errors excepted!

## Features

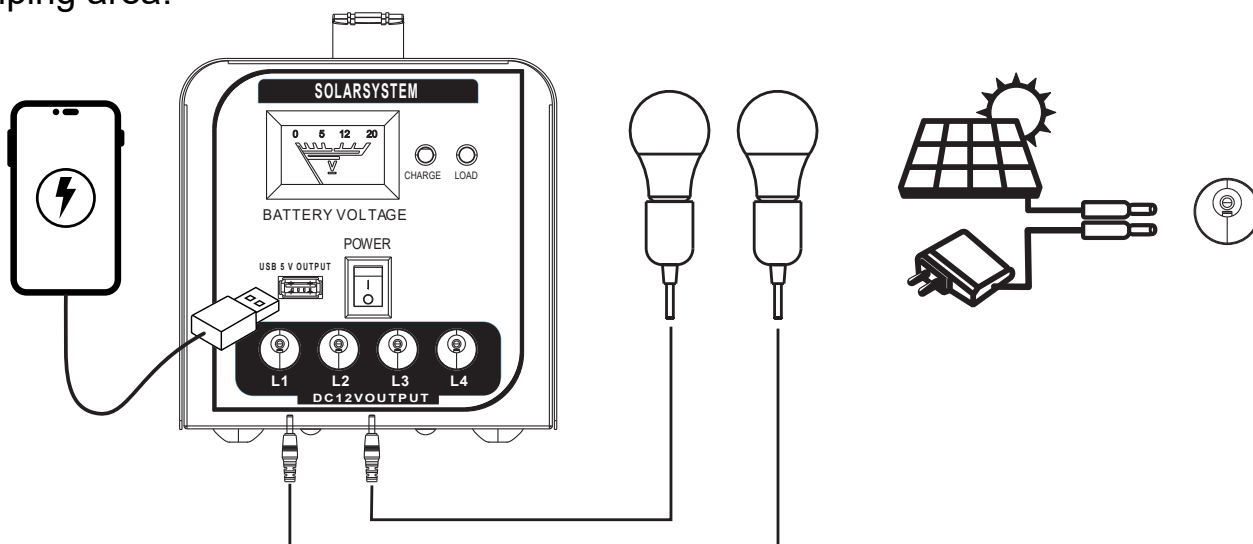
- 18W Solar panel with 8 Meter cable length
- 4pcs LED bulbs with 4.2 Meter cable length and On/Off switch
- USB charging port (max. 5V, max. 1A)
- AC/DC charger

## Product description

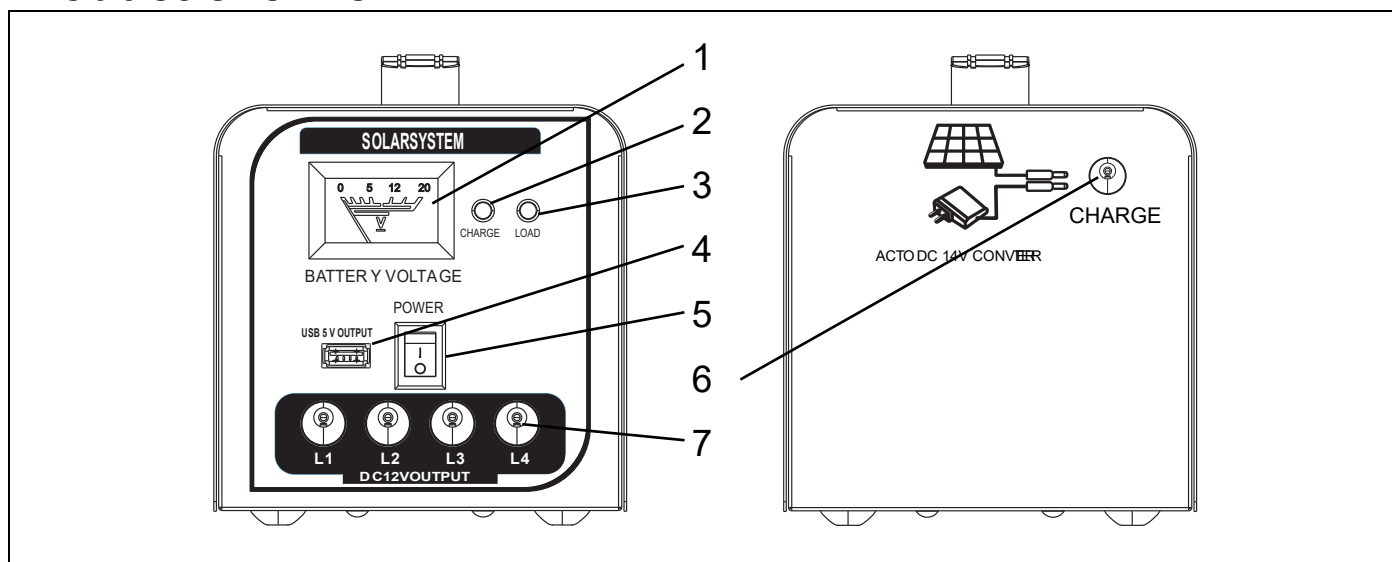
This power station is used to charge small devices such as smartphones or radios, for example, in emergency situations or camping.

The attached solar panel can charge the device independently of power sources by the power of sunlight alone.

The attachable light bulb system and 4 pieces LED bulbs can illuminate your tent or camping area.



## Product overview



1	Voltage Indicator of battery	2	Charge indicator LED
3	Load indicator LED	4	USB 5V / 1A output
5	Power on / off	6	Solar panel input DC input 14.8V / 1A
7	Output LED 12V / 1A total		

## First use

Charge the battery with the AC charging cable by plugging it into the power station (5) and a 110V-230V 50-60Hz AC outlet until the indicator LED (4) turns solid green. This may take approximately 6-9 hours.

## LED indicator light

The indicator LED (4) of the device shows the charging status of the device according:

Green steady light	Fully charged
Green slow flashing light	Sufficient battery
Slow flashing orange light	Low battery
Red slow flashing light	Power off soon

## LED light bulb system

Plug the cable of the three LED light bulbs into the LED bulb output (6) at the device to power them. Each light bulb can be turned on and off separately with the switch at the power cord of the bulb.

**WARNING:** Never plug the LED bulb into an E27 socket with more than 12V. The LED bulb may become very hot. It may cause an electronic shock and/or a house fire.

## USB output

To charge devices via the USB output (2), plug your USB charging cable into the USB port and connect the device to be charged to the USB charging cable.

Note: Charging may not support the full charging speed of your device as the output is limited to 5V/1A.

## Solar powered charging

Place the 18W solar panel in direct sunlight with the panel facing the sun for best energy harvesting.

Insert the plug of the solar panel into the power station (3) to charge it. Charging time varies greatly depending on weather and conditions.

Note: If you charge devices via USB or use the LED lights during solar charging, the charging process may take longer.

## Technical specifications

Solar panel	Max. 18W
Solar cable length	8 Meter
Power station battery	Rechargeable lead acid 12V / 7AH SLA battery
Input power adapter	14.8V / 1A
Input voltage solar panel	Max. 18V
USB output	5V / 1A
LED bulb plug	12V / 2A total hollow connector
LED bulb	4x LED / 6000K
LED bulb cable length	4.2 Meter
Charging time	6-9 hours (depending on solar charging or DC)
Working time	Up to 36 hours
Working temperature	-15°C – 40°C
Material	Metal
Dimmension power station	(l) 222 x (w) 128 x (h) 130mm
Dimmension solar panel	(l) 330 x (w) 380 x (h) 20mm
Weight power station	5.25 kg
Wheight solar panel	1.0 kg
Package content	TX-200 Power station, 4pcs LED bulbs, 4pcs E27 lamp adapter, power adapter, manual

## Support

Service phone No. for technical support: **01805 012643** (14 cent/minute from German fixed-line and 42 cent/minute from mobile networks). Free Email: **support@technaxx.de**

The support hotline is available Mon-Fri from 9am to 1pm & 2pm to 5pm

## Care and maintenance

Clean the device only with a dry or slightly damp, lint-free cloth.

Do not use abrasive cleaners to clean the device.

Please avoid the following practice:

- Use the device in ultra-high or ultra-low temperature.
- Keep it or use it in moist environment.
- Use it in rainfalls or in water.
- Deliver or use it in strongly shocking environment.

## Declaration of Conformity



The EU Declaration of Conformity can be requested at the following address: [www.technaxx.de/](http://www.technaxx.de/) (in the lower bar "Declaration of Conformity").

## Disposal



Disposal of the packaging. Sort packaging materials by type upon disposal.

Dispose of cardboard and paperboard in the waste paper. Foils should be submitted for recyclables collection.



Disposing of old equipment (Applies in the European Union and other European countries with separate collection (collection of recyclable materials) Old equipment must not be disposed of with household waste! Every consumer is required by law to dispose of old devices that can no longer be used separately from household waste, e.g. at a collection point in his or her municipality or district. This ensures that the old devices are properly recycled and that negative effects on the environment are avoided. For this reason, electrical devices are marked with the symbol shown here.



Batteries and rechargeable batteries must not be disposed of in household waste! As a consumer, you are required by law to dispose of all batteries and rechargeable batteries, whether they contain harmful substances\* or not, at a collection point in your community/city or with a retailer, to ensure that the batteries can be disposed of in an environmentally friendly manner. \* marked with: Cd = cadmium, Hg = mercury, Pb = lead. Return your product to your collection point with the fully discharged battery installed inside!

Made in China  
Distributed by:  
Technaxx Deutschland GmbH & Co. KG  
Konrad-Zuse-Ring 16-18,  
61137 Schöneck, Germany