

Product Information Sheet

COMMISSION DELEGATED REGULATION (EU) 2019/2015 with regard to energy labelling of light sources

Supplier's name or trade mark: Voltolux

Supplier's address: Quality Management / Qualitätsmanagement, BAHAG AG Service Center
Deutschland Gutenbergstr. 21 68167 Mannheim

Model identifier: 25361700

Type of light source:

Lighting technology used:	LED	Non-directional or directional:	DLS
Light source cap-type (or other electric interface)	GU5.3		
Mains or non-mains:	NMLS	Connected light source (CLS):	Nej
Colour-tuneable light source:	Nej	Envelope:	-
High luminance light source:	Nej		
Anti-glare shield:	Nej	Dimmable:	No

Product parameters

Parameter	Value	Parameter	Value
-----------	-------	-----------	-------

General product parameters:

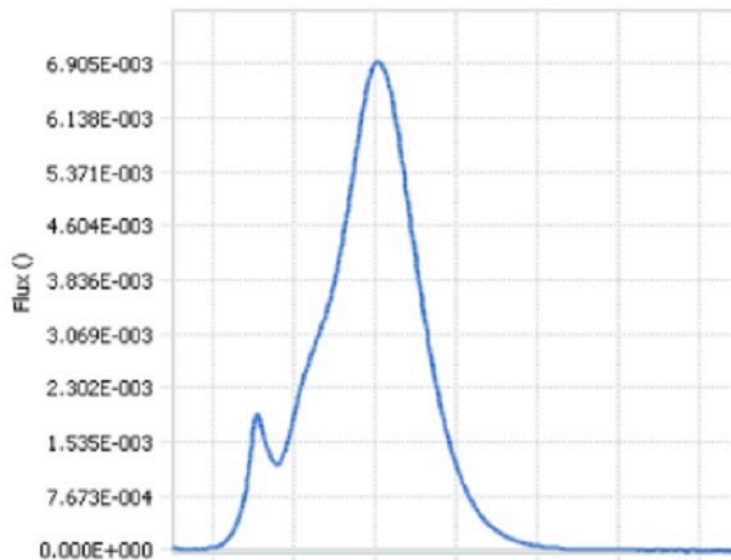
Energy consumption in on-mode (kWh/1000 h), rounded up to the nearest integer	5	Energy efficiency class	G
Useful luminous flux (ϕ_{use}), indicating if it refers to the flux in a sphere (360°), in a wide cone (120°) or in a narrow cone (90°)	280 in Wide cone (120°)	Correlated colour temperature, rounded to the nearest 100 K, or the range of correlated colour temperatures, rounded to the nearest 100 K, that can be set	2 700
On-mode power (P_{on}), expressed in W	4,5	Standby power (P_{sb}), expressed in W and rounded to the second decimal	0,00
Networked standby power (P_{net}) for CLS, expressed in W and rounded to the second decimal	-	Colour rendering index, rounded to the nearest integer, or the range of CRI-values that can be set	80
Outer dimensions	Height	Spectral power distribution in the	See image in last page
	Width		

without separate control gear, lighting control parts and non-lighting control parts, if any (millimetre)	Depth	50	range 250 nm to 800 nm, at full-load	
Claim of equivalent power ^(a)		-	If yes, equivalent power (W)	-
			Chromaticity coordinates (x and y)	0,463 0,420
Parameters for directional light sources:				
Peak luminous intensity (cd)		140	Beam angle in degrees, or the range of beam angles that can be set	110
Parameters for LED and OLED light sources:				
R9 colour rendering index value		2	Survival factor	1,00
the lumen maintenance factor		0,96		

(a) '-': not applicable;

(b) '-': not applicable;

Name	Value	Unit
Φ	9.827E-01	Watts
$\Phi(v)$	3.222E02	lumens
$\Phi(v')$	3.887E02	lm'
Chrom x	0.4625	
Chrom y	0.4206	
Chrom u	0.2598	
Chrom v	0.3543	
Duv	0.0032	
Chrom u'	0.2598	
Chrom v'	0.5315	
λ (peak)	602.8	nm
λ (center)	600.2	nm
λ (centroid)	590.2	nm
λ (dom)	583.0	nm
FWHM	117.0	nm
Purity	65.1	%
CCT	2738.0	°K
SDCM	.6 F 2700	
Correlation	0.0054	
Corr. Coef.	0.00344484485060284	
RA	80.419704768732	
R1	78	
R2	89.9	
R3	95.7	
R4	77.4	
R5	78.2	
R6	88.7	
R7	81.3	
R8	54.1	
R9	-1.2	
R10	78	
R11	76.1	
R12	71.7	
R13	80.6	
R14	98.1	



CIE 1931, 2 Degree

